

TEST REPORT

Test Report No.: 317S0097.001E
Report Date: 23 January 2017

Client: **Belinda Lobb**
One Stroke Inks
 458 Roberts Ave, Louisville, KY 40214
 Phone: 502-366-1070 Fax: 502-366-1344
 Email: blobb@osinks.com

Client Number: 50006700
Order Number: 145138
Date of Receipt: 11 January 2017
Item Description: Printed Ink Sample
of Samples Submitted: 1
Product Code: NA
Item Number: SPARKLE SERIES
Style Number: NA
Color: Clear
UPC: NA
PO: NA
Country of Origin: USA
Manufacturer's name: One Stroke Inks
Country of Destination: NA
Retest? No
Delivery condition: *Apparent good*

Customer Test Instructions:

| Test specification: | Test result: |
|----------------------------------|---------------------|
| 1. CPSIA Total Phthalate Content | Pass |
| 2. CPSIA Total Lead Content | Pass |

For and on behalf of
 TÜV Rheinland of North America



Mark Smith / Laboratory Manager
 Phone: (479) 250-0059
 Email: MSmith@us.tuv.com

For and on behalf of
 TÜV Rheinland of North America



William Tyree / Chemistry Technician
 Phone: (479) 250-1932
 Email: wtyree@us.tuv.com

This test report relates to the above mentioned test item and extent of tests performed. This test report is not permitted to be duplicated in extracts without permission of the test facility. This test report does not entitle any safety mark on this or similar products.

Testing Period: 11 January 2017 to 23 January 2017

Material Breakdown List - Chemical Testing

| Material No. | Material | Color | Component / Location |
|--------------|----------------|-------|----------------------|
| 1 | Printed Sample | Clear | SPARKLE SERIES |

RESULTS
1. PHTHALATE CONTENT IN SUBSTRATES:

Per client's request, the product shall comply with the Consumer Product Safety Improvement Act (CPSIA) and shall not contain more than 0.1% of the phthalates shown below.

Test method: The sample was analyzed by organic solvent extraction and GCMS according to CPSC-CH-C1001-09.3

| Test No. | Material or Component | MDL: 0.005% | | | | | | Maximum Permissible Limit 0.100 % (Pass/Fail) |
|----------|-----------------------|-------------|---------|----------|----------|----------|----------|--|
| | | BBP (%) | DBP (%) | DEHP (%) | DIDP (%) | DINP (%) | DnOP (%) | |
| 1 | 1 | <0.005% | <0.005% | <0.005% | <0.005% | <0.005% | <0.005% | Pass |

Abbreviation: MDL = Method Detection Limit
 DBP = Dibutyl phthalate
 BBP = Butyl benzyl phthalate
 DINP = Di-iso-nonyl phthalate

DEHP = Di-2-ethylhexyl phthalate
 DnOP = Di-n-octyl phthalate
 DIDP = Di-iso-decyl phthalate

2. TOTAL LEAD CONTENT IN SURFACE COATING:

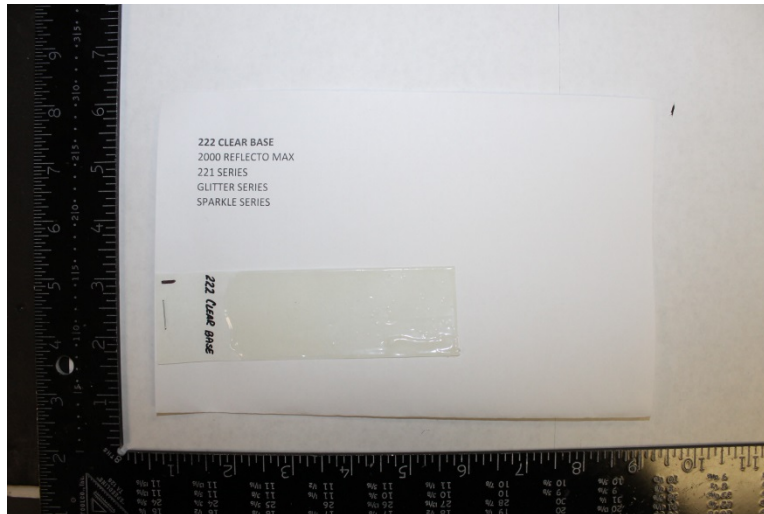
Per client's request, the product shall comply with the Consumer Product Safety Improvement Act (CPSIA) and shall not contain more than 0.0090% (90 ppm) total lead.

Test method: The sample was analyzed by High Definition X-Ray Fluorescence Spectrometry (HD-XRF) according to ASTM F2853-10

| Test No. | Material or Component | Lead Content (mg/kg) | Maximum Permissible Limit 90 mg/kg (CPSIA) (Pass/Fail) |
|----------|-----------------------|----------------------|--|
| | | MDL: 5 mg/kg | |
| 1 | 1 | < 5 mg/kg | Pass |

Abbreviation: MDL = Method Detection Limit mg/kg denotes milligram per kilogram (ppm)

Sample photos:



-- END --